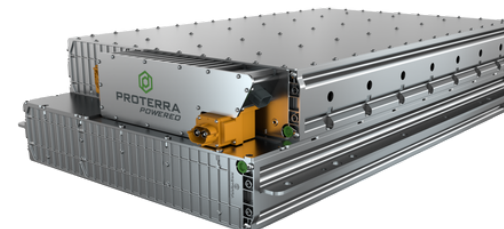
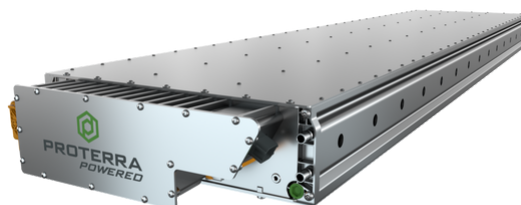


# PROTERA® Battery Pack Features & Specifications



PROTERRA BATTERY PACK			
	PARAMETER	UNIT	SPECIFICATION
<b>ENERGY DENSITY</b>	Gravimetric Energy Density	Wh/kg	Up to 178
	Volumetric Energy Density	Wh/L	Up to 300
<b>VOLTAGE</b>	Voltage Range	VDC	Up to 1000V
<b>DIMENSIONS</b>	Height	mm	175 - 347
	Width	mm	S Series: 860 H Series: 620
	Cubic	mm	615 (W) x 708 (H) x 846 (L)
<b>CHARGE</b>	Overnight Charge Rate	C-Rate	0.5C
	Fast Charge Rate	C-Rate	Up to 1.0C
<b>POWER</b>	Continuous Power	E-Rate	Up to 1.2E
	Peak Power (5 Min)	E-Rate	1.5E
	Peak Power (30 Sec)	E-Rate	2.0E
<b>CYCLE LIFE</b>	Cycle Life (Performance Cell)	cycles	>4000 cycles @ 90% DoD
	Expected SOH at EoL	%	>70 %
<b>TEMPERATURE</b>	Ambient Temperature	°C	-30°C to +55°C
<b>INGRESS</b>	Ingress Protection	IP67 / IP6K9K / IPXXB	
<b>THERMAL MANAGEMENT</b>	Type of Cooling	Liquid, 50/50 Water Ethylene Glycol	
<b>COMMUNICATION</b>	Communication	CAN 2.0B (J1939 capable)	
	Diagnostics	Proprietary (DM1 capable)	
<b>STRING CONFIGURATIONS</b>	Up to 4 packs in series		
<b>ESS CONFIGURATIONS</b>	Up to 16 strings in parallel		
<b>TESTING REQUIREMENTS</b>	SAE J2929, UN38.3, ISO 20653, GMW 14872, IEC 60068-2-1, ECE 80, SAE J2464, ECE R100.03		



SPEC\_BAT\_SHPACK\_Q22023