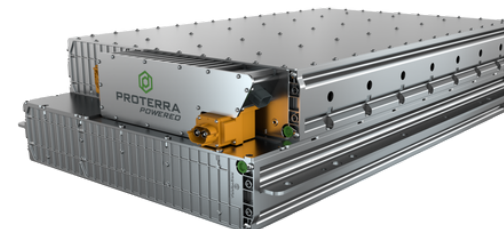
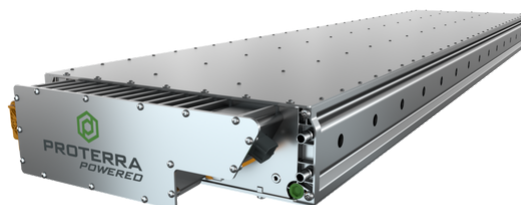


PROTERA® Battery Pack Features & Specifications



PROTERRA BATTERY PACK			
	PARAMETER	UNIT	SPECIFICATION
ENERGY DENSITY	Gravimetric Energy Density	Wh/kg	Up to 178
	Volumetric Energy Density	Wh/L	Up to 300
VOLTAGE	Voltage Range	VDC	Up to 1000V
DIMENSIONS	Height	mm	175 - 347
	Width	mm	S Series: 860 H Series: 620
	Cubic	mm	615 (W) x 708 (H) x 846 (L)
CHARGE	Overnight Charge Rate	C-Rate	0.5C
	Fast Charge Rate	C-Rate	Up to 1.0C
POWER	Continuous Power	E-Rate	Up to 1.2E
	Peak Power (5 Min)	E-Rate	1.5E
	Peak Power (30 Sec)	E-Rate	2.0E
LIFE	Expected SOH at End of Life	%	>70 %
TEMPERATURE	Ambient Temperature	°C	-30°C to +55°C
INGRESS	Ingress Protection	IP67 / IP6K9K / IPXXB	
THERMAL MANAGEMENT	Type of Cooling	Liquid, 50/50 Water Ethylene Glycol	
COMMUNICATION	Communication	CAN 2.0B (J1939 capable)	
	Diagnostics	Proprietary (DM1 capable)	
STRING CONFIGURATIONS	Up to 4 packs in series		
ESS CONFIGURATIONS	Up to 16 strings in parallel		
TESTING REQUIREMENTS	SAE J2929, UN38.3, ISO 20653, GMW 14872, IEC 60068-2-1, ECE 80, SAE J2464, ECE R100.03		



SPEC_BAT_SHPACK_Q32023