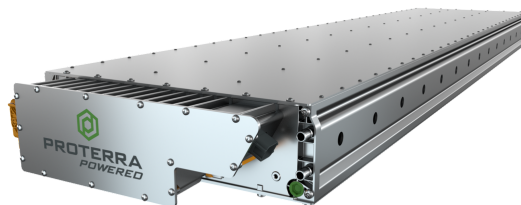


# PROTERRA® Battery Pack Features & Specifications



**PROTERRA**  
POWERED™

| PROTERRA BATTERY PACK        |  |                                     |                             |
|------------------------------|--|-------------------------------------|-----------------------------|
|                              | PARAMETER  | UNIT                                | SPECIFICATION               |
| <b>ENERGY DENSITY</b>        | Gravimetric Energy Density   | Wh/kg                               | Up to 178                   |
|                              | Volumetric Energy Density  | Wh/L                                | Up to 300                   |
| <b>VOLTAGE</b>               | Voltage Range  | VDC                                 | Up to 1000V                 |
| <b>DIMENSIONS</b>            | Height   | mm                                  | 175 - 347                   |
|                              | Width  | mm                                  | S Series: 860 H Series: 620 |
|                              | Cubic  | mm                                  | 615 (W) x 708 (H) x 846 (L) |
| <b>CHARGE</b>                | Overnight Charge Rate  | C-Rate                              | 0.5C                        |
|                              | Fast Charge Rate   | C-Rate                              | Up to 1.0C                  |
| <b>POWER</b>                 | Continuous Power   | E-Rate                              | Up to 1.2E                  |
|                              | Peak Power (5 Min)   | E-Rate                              | 1.5E                        |
|                              | Peak Power (30 Sec)  | E-Rate                              | 2.0E                        |
| <b>LIFE</b>                  | Expected SOH at End of Life  | %                                   | >70 %                       |
| <b>TEMPERATURE</b>           | Ambient Temperature  | °C                                  | -30°C to +55°C              |
| <b>INGRESS</b>               | Ingress Protection   | IP67 / IP6K9K / IPXXB               |                             |
| <b>THERMAL MANAGEMENT</b>    | Type of Cooling  | Liquid, 50/50 Water Ethylene Glycol |                             |
| <b>COMMUNICATION</b>         | Communication  | CAN 2.0B (J1939 capable)            |                             |
|                              | Diagnostics  | Proprietary (DM1 capable)           |                             |
| <b>STRING CONFIGURATIONS</b> | Up to 4 packs in series  |                                     |                             |
| <b>ESS CONFIGURATIONS</b>    | Up to 16 strings in parallel   |                                     |                             |
| <b>TESTING REQUIREMENTS</b>  | SAE J2929, UN38.3, ISO 20653, GMW 14872, IEC 60068-2-1, ECE 80, SAE J2464, ECE R100.03 |                                     |                             |



SPEC\_BAT\_SHPACK\_Q32023